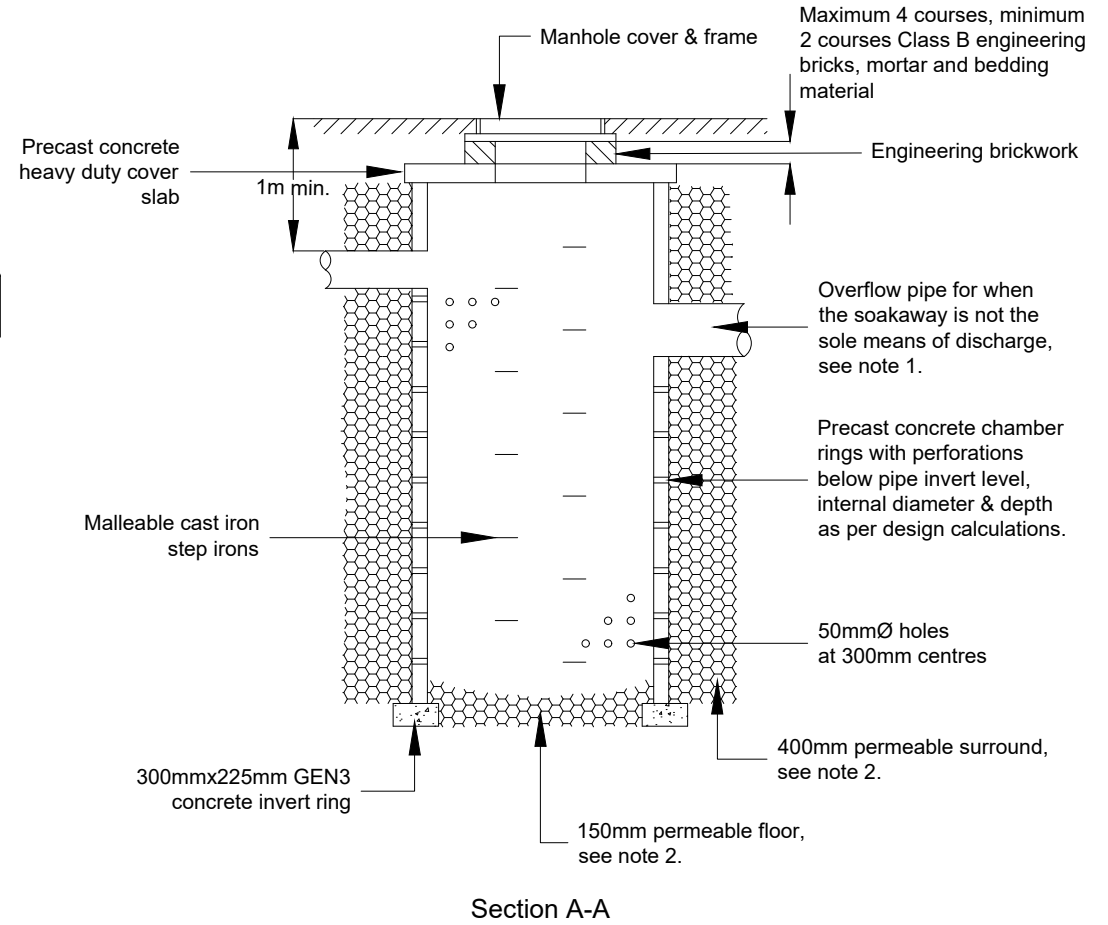
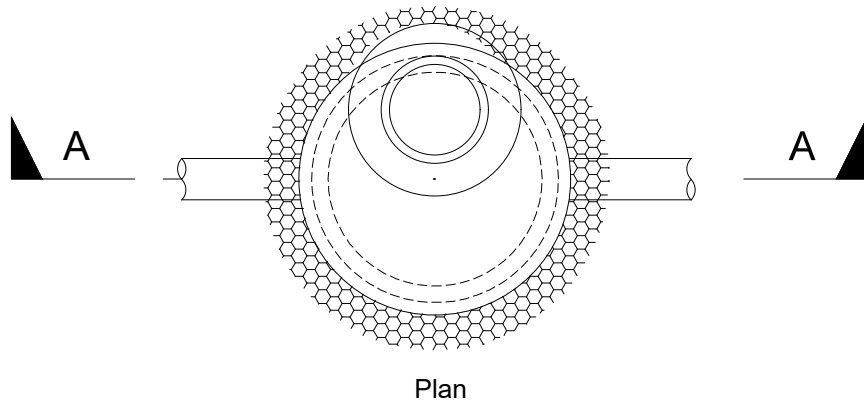



ALL DIMENSIONS ARE IN MILLIMETRES  
UNLESS OTHERWISE STATED



**Notes:**

1. A soakaway may be included in a pipe network to discharge light rainfall into the ground.
2. The permeable surround should not contain organic material and have the following characteristics:
  - 100% passing a 75mm sieve
  - 0 to 5% passing a 5mm sieve
  - A ten percent fines value of 30kn, or more, when wet.
  - Wherever possible recycled material should be used.

**TYPICAL CHAMBER SOAKAWAY**

	COUNTY HALL Pegs Lane Hertford, Herts SG13 8DN Phone: 01992 555555	<b>Revisions</b> A - AUG 23    UPDATED DETAIL B - C -	<b>Drawing Title</b> TYPICAL PRECAST CONCRETE CHAMBER SOAKAWAY	<b>Dwg No:</b> HST/500/004			
					<b>Scale at A4 :</b> N.T.S.		
					<b>Drawn</b> PAS	<b>Approved</b> JE	<b>Revised</b>
					<b>Checked</b> STM	<b>Date</b> JULY '11	<b>Date</b>