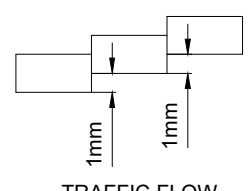
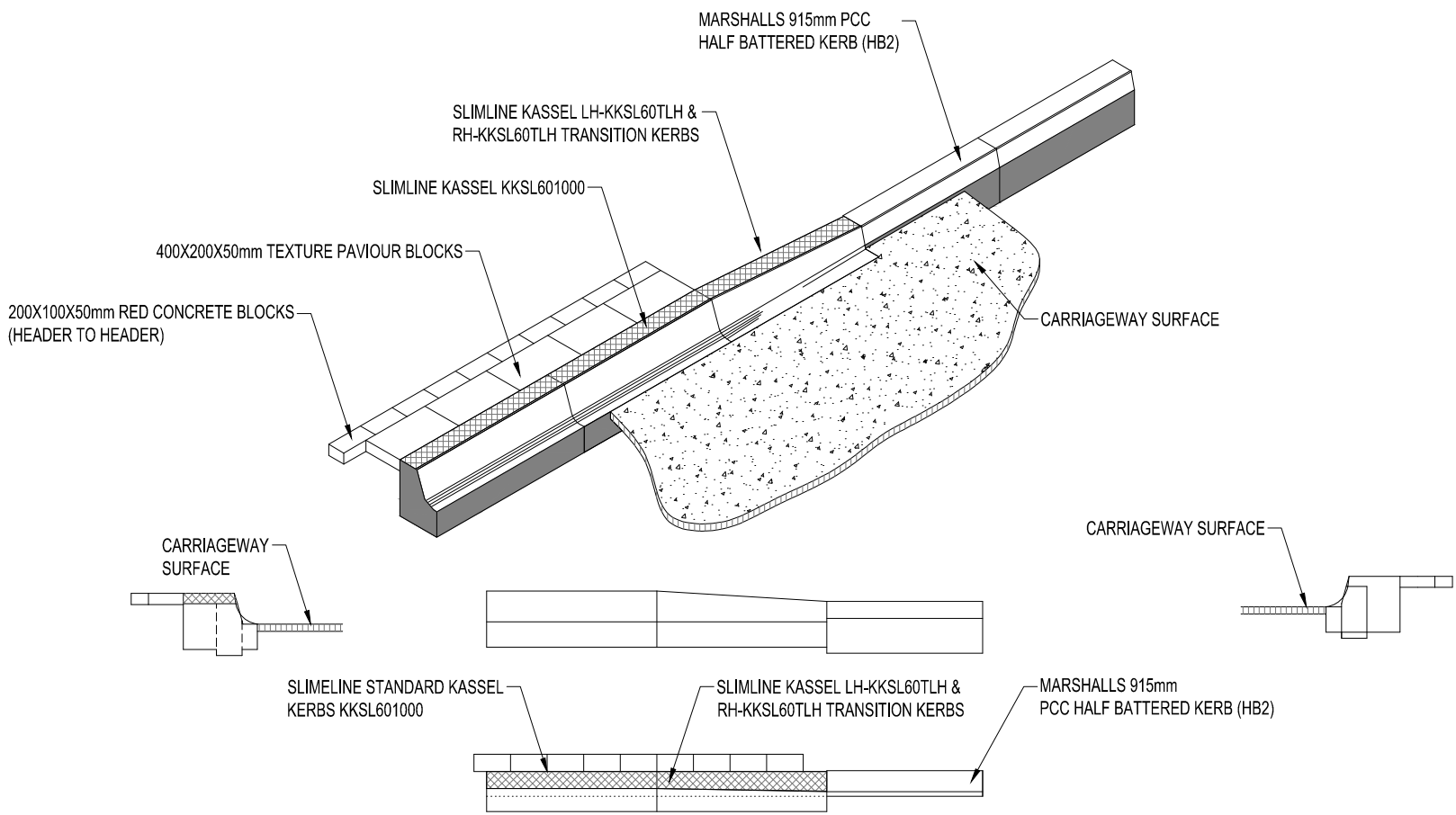
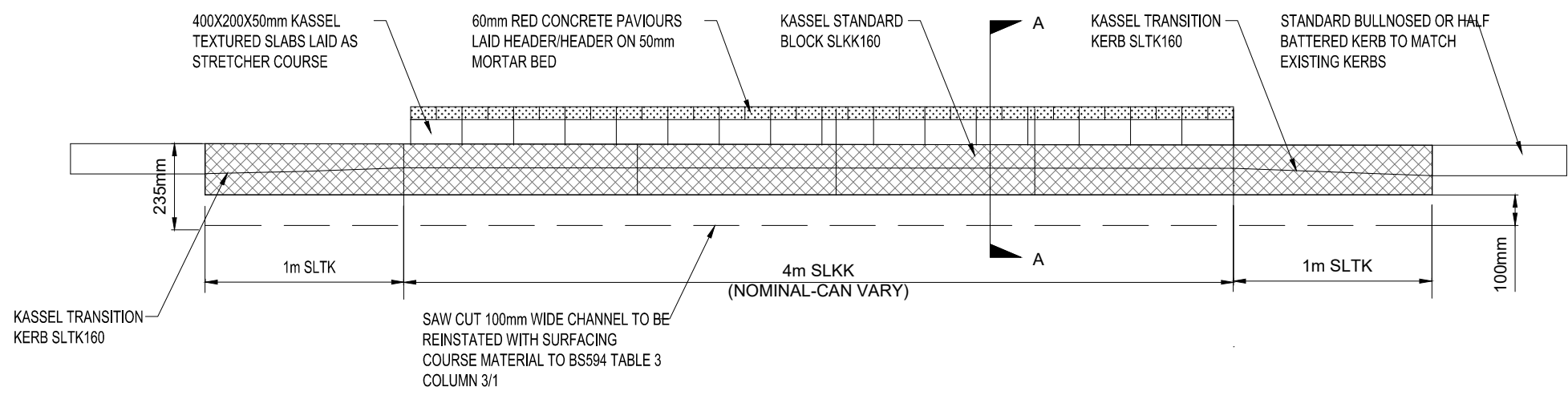


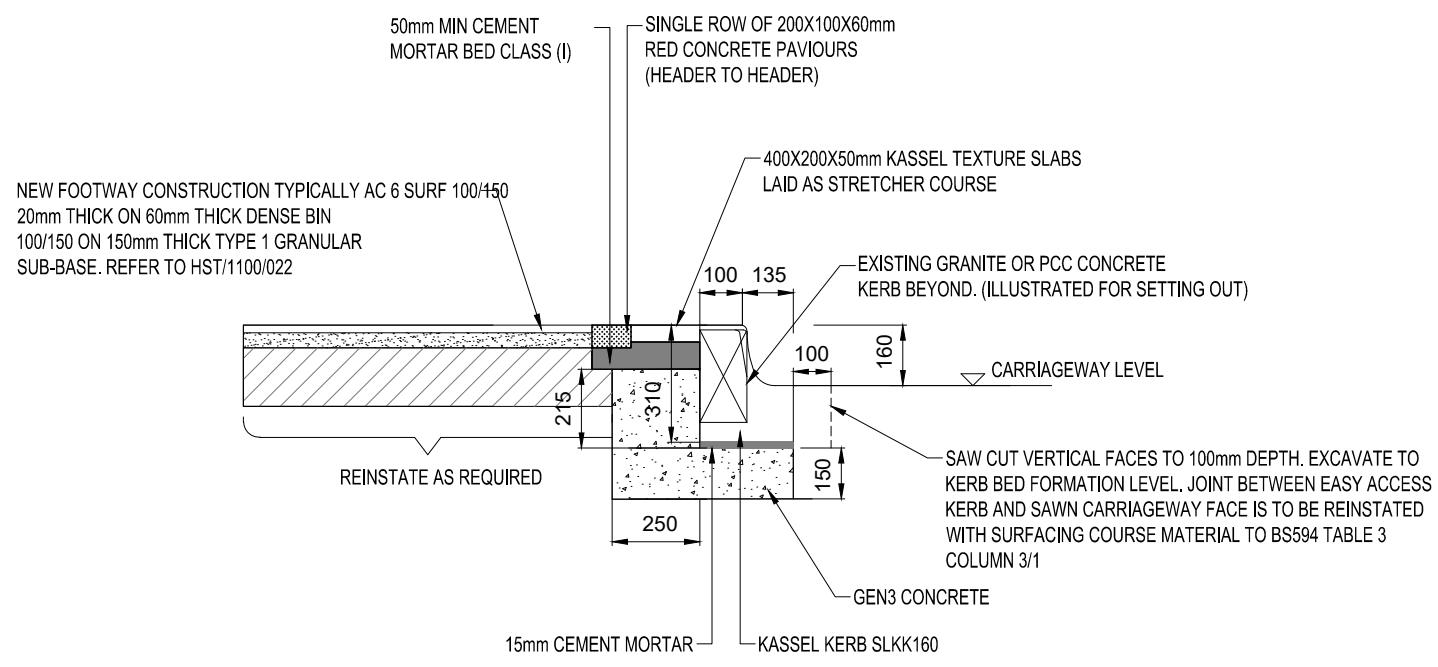
NOTE:
 SPECIAL "KASSEL" KERBS ARE LAID STRAIGHT IN BOTH HORIZONTAL AND VERTICAL ALIGNMENTS.
 TOLERANCES ARE:
 VERTICAL ±1MM
 HORIZONTAL 0-1MM(STEPPING BACK)
 SEE BELOW

ISOMETRIC VIEW
 DETAILS OF SLIMLINE KASSEL KERBS WITH TEXTURE PAVING AND RED PAVIOURS



PLAN VIEW



SECTION A-A
 DETAIL OF FULL-HEIGHT SLIMLINE KASSEL KERBS WITH TEXTURE PAVING AND RED PAVIOURS BEHIND



Revisions

A -	FEB 20	REVISED DETAIL
B -	AUG 23	UPDATED DETAIL
C -		

Drawing Title
 SLIMLINE KASSEL KERB
 STANDARD FOOTWAY CONSTRUCTION DETAILS
 OPTION 1

Dwg No:	HST/1100/044				
Scale at A3:	1:200				
Drawn	YS	Approved	HH	Revised	A
Checked	KK	Date	JULY 11	Date	FEB 20