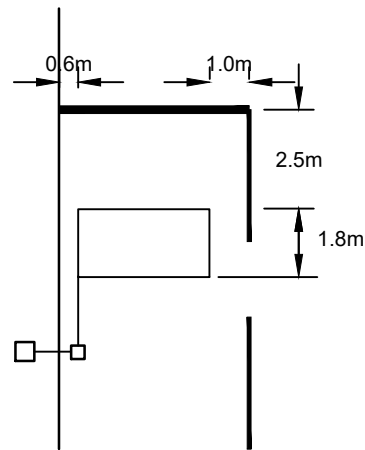
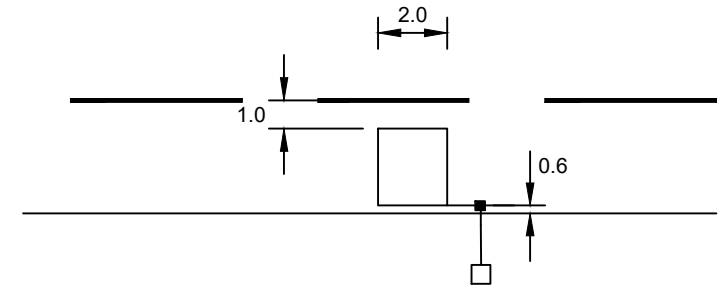


MOVA LOOP DETAIL

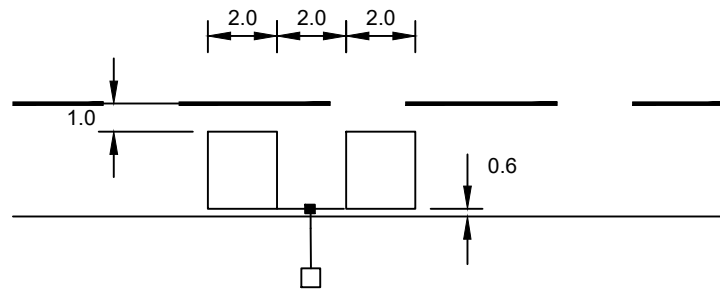


STOP LINE LOOP

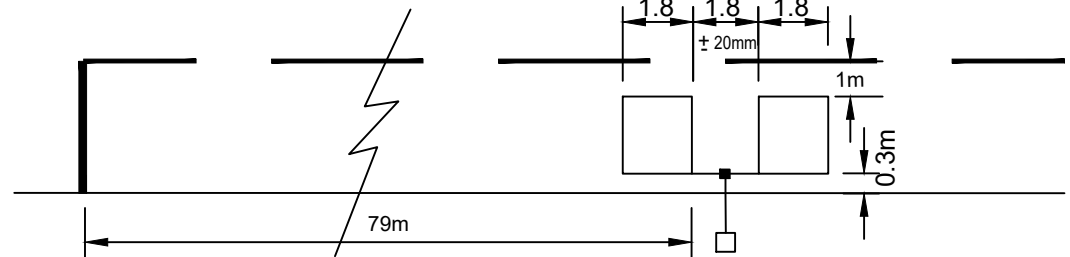
- NOTES:**
1. All dimensions are in metres unless stated otherwise.
 2. To HCD Drawing Nos G19, G21, G24 & G31
 3. All inductive loops shall use loop detector boxes to enter the duct system as shown on HST/1200/510
 4. Uni-directional loops (to be specified by *Engineer*)
 5. All red loops (to be specified by *Engineer*)



SCOOT LOOP



SCOOT LOOP AND PRISM BUS DETECTION LOOP



SPEED DISCRIMINATION LOOP DETAIL



COUNTY HALL
Pegs Lane
Hertford, Herts
SG13 8DN
Phone: 01992 555555

Revisions

- A -
- B -
- C -

Drawing Title

INDUCTIVE LOOP
LAYOUT
2 OF 2

Dwg No: HST/1200/506

Scale at A4 : N.T.S.

Drawn	Approved	Revised
PAS	CJG	-
Checked	Date	Date
AJM	JULY '11	-