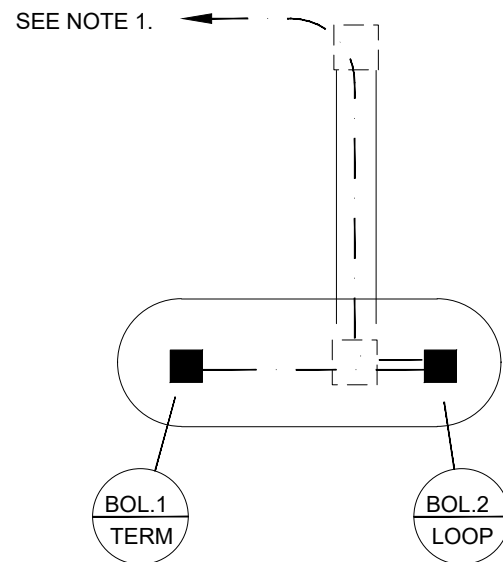
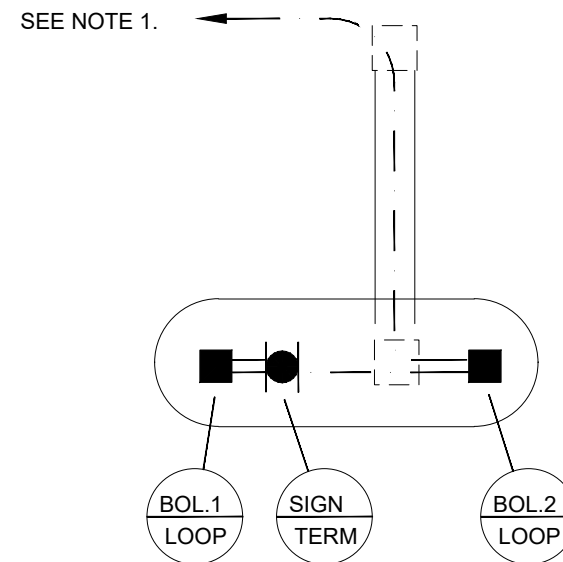


Centre island with one bollard



Centre island with two bollard



Centre island with two bollards and lit sign

**NOTES:**

1. Mains voltage - Connected to supply in adjacent column/sign or feeder pillar.
2. Mains voltage - Cable shall be XLPE/PVC/SWA/PVC 6mm<sup>2</sup> 3 core with copper conductors.
3. Bollards and draw pits to be compliant with the Roads in Hertfordshire specification.
4. Where SWA cables are terminated in bollard base, one way external brass plate and full CW/BW glands shall be installed inside bollard base.
5. Where a Central Island Beacon or sign is installed on the island, retention socket shall be used complete with earth bonding connection to the retention socket and the main earth terminal.
6. Single 50mm MDPE duct (orange) to be installed between the pit and assets on the island. 2 No. 100mm MDPE ducts (orange) between draw pits for road crossings

**KEY**

- Bollard
- Draw pit
- 2 No. 100mm dia MDPE duct (orange)
- Cable (see note 2)
- Sign or central beacon

Notes	
A	Various drawing revisions
	Description

AS	RC	DOK	07/21
Dwn	Chk	App	Date

IWP No.				Drg No. HST-1400-004				Rev. A	
	CAD	Drawn	Checked	Approved		Project Title			
Initials	PB	PB	ADS	PW		HCC STANDARD DETAIL DRAWINGS			
Date	01/10	04/10	04/10	04/10		Sht. No. 1 OF 1			
Scales				NTS					

CENTRAL ISLAND TERMINATION	
----------------------------	--

COUNTY HALL  
Pegs Lane  
Hertford, Herts  
SG13 8DN  
Phone: 01992 555555