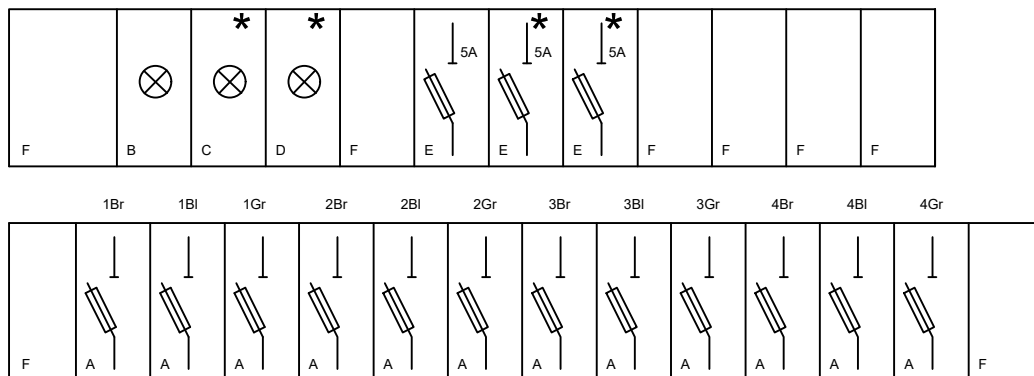


**SUPPLY ON**



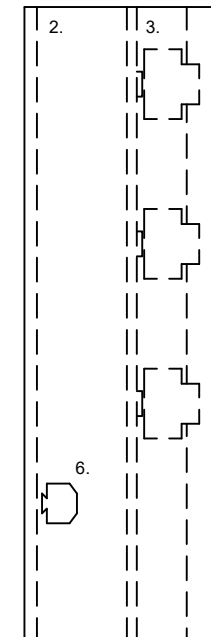
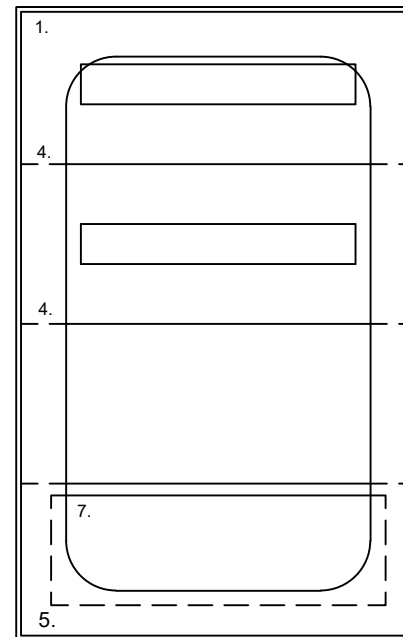
**ITEM DESCRIPTION**

- A. BS88 fuse carrier with fuse for fuse rating see contract documents
- B. Neon indicator (red)
- C. Neon indicator (orange) \*
- D. Neon indicator (blue) \*
- E. H BS88 fuse carrier with fuse
- F. I Blanking off insert

**ITEM DISCRIPTION**

- 1. Enclosure with glazed door
- 2. Mounting plate.
- 3. Modular chassis
- 4. Modular front cover.
- 5. Blank front cover
- 6. Terminal rail
- 7. Encapsulated copy of control panel wiring diagram.

\* OMIT ITEM WHEN WIRING AS SINGLE PHASE



**NOTE:**

To be read in conjunction with Drg. No's HST/1400/021-22

Notes

IWP No.

Drg. No.

Rev.

HST-1400-023

-

	CAD	Drawn	Checked	Approved
Initials	PB	PB	ADS	FPL
Date	7/11	7/11	7/11	7/11

Project Title

HCC STANDARD DETAIL DRAWINGS

Sht No. 1 OF 1

Drawing Title

THREE PHASE / 12 WAY GROUP SWITCHING PANEL GENERAL LAYOUT

Scales NTS



COUNTY HALL  
Pegs Lane  
Hertford, Herts  
SG13 8DN  
Phone: 01992 555555