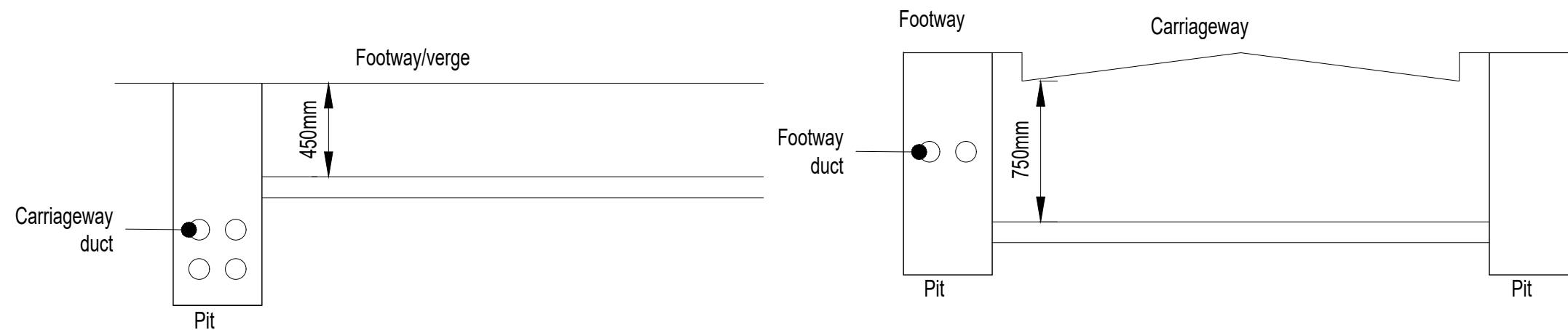


NOTES:

1. All Dimensions are in Millimetres.
2. All ducts shall be 100mm dia thick walled rigid medium density polyethylene smooth bore.
3. Ducts shall be permanently coloured according to their use as below:
 Orange = Private power cables (Signals / Street Lighting)
 Black = Distribution Network Operator (DNO)
 Grey = BT
4. All ducts shall be left with a spare draw wire in them after any cables are pulled.
5. All ducts shall protrude by at least 75mm in to the pit/pillar to allow for identification.
6. Selected Granular fill type 6N



Notes

A	Various drawing revisions	AS	RC	DOK	07/21
	Description	Dwn	Chk	App	Date

IWP No.		Drg. No.	HST-1400-037	Rev.	A
CAD	Drawn	Checked	Approved	Project Title	
Initials	PB	PB	ADS	HCC STANDARD DETAIL DRAWINGS	
Date	01/10	04/10	04/10	Drawing Title	
Sht No.	1 OF 1			DUCT AND PIT DETAILS	
Scales	NTS			PLAN 1	

Project Title		HCC STANDARD DETAIL DRAWINGS	
Drawing Title		DUCT AND PIT DETAILS	
PLAN 1			

COUNTY HALL
 Pegs Lane
 Hertford, Herts
 SG13 8DN
 Phone: 01992 555555